

91°53'W

91°52'W

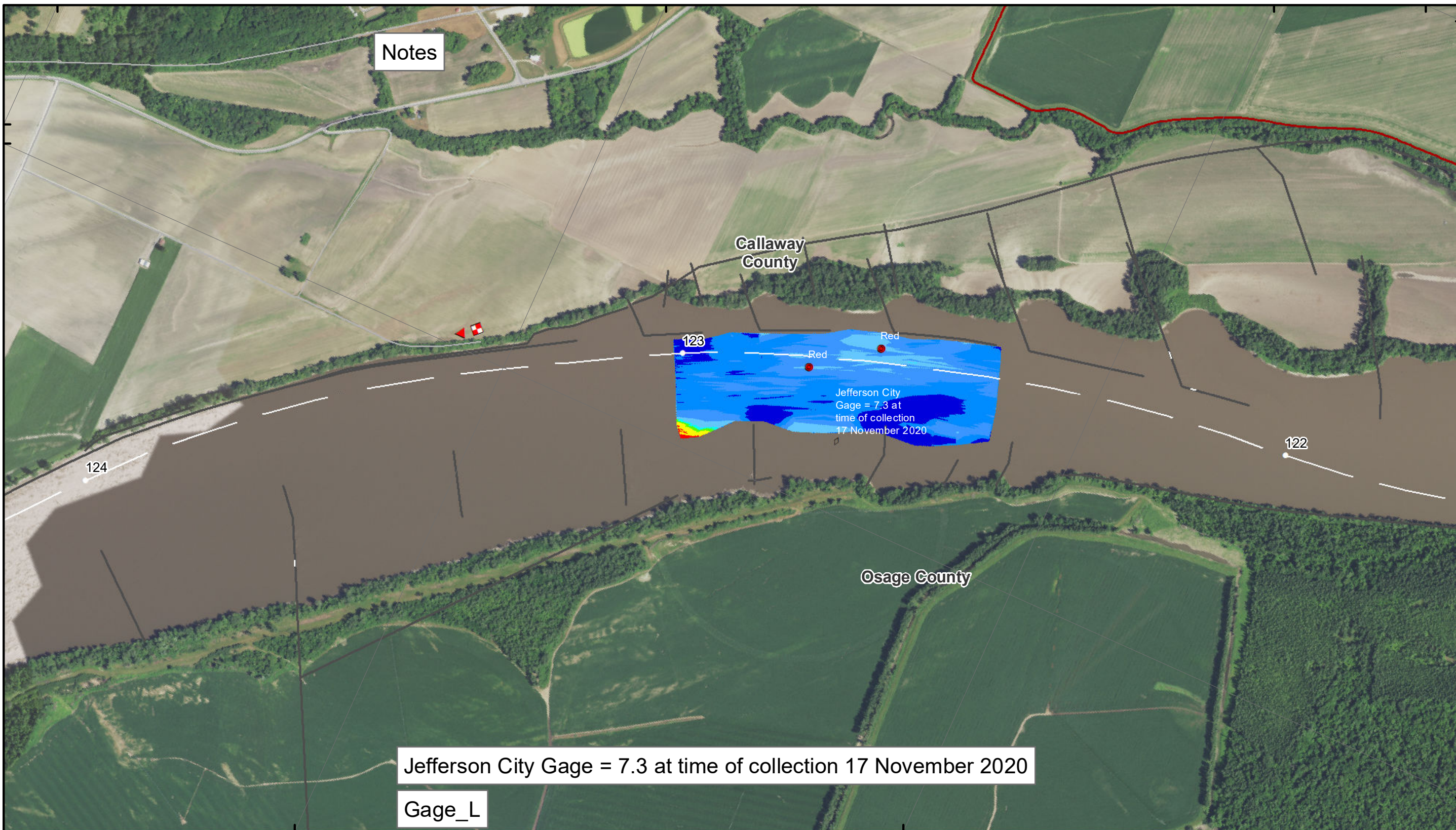
91°51'W

38°41'N

38°40'N

38°41'N

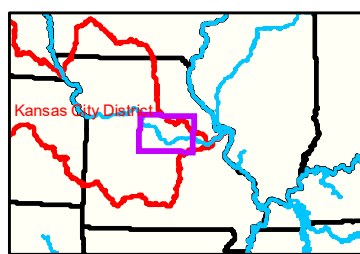
38°40'N



Notes

Jefferson City Gage = 7.3 at time of collection 17 November 2020

Gage_L



LEGEND

	< 8		< 8 ft		Green Passing		Green		AIS Green CAN
	8 - 9		8 - 9 ft		Red Passing		Red		AIS Red NUN
	9 - 9.5		9 - 10 ft		Green Crossing		Green CAN		Red NUN
	9.5 - 10		10 - 12 ft		Red Crossing		Junction		
	10 - 12		River Mile						
	12 - 14		Sailing Line						
	14 - 16		BSNP Structure						
	> 16		Levee						

Buoy

- AIS Green CAN
- AIS Red NUN
- Green CAN
- Red NUN

Scale: 0 312.5 625 937.5 1,250 2,500 Feet

Compass Rose: N, S, E, W

NOTES:
 Horizontal Coordinate System:
 World Geodetic System of 1984 (WGS84), projected to the Universal Transverse Mercator (UTM) Zone 15 North. Distance units in U.S. Survey Feet

Vertical Datum:
 Soundings are shown in feet and indicated depths are referenced to water surface at time of collection.

The information depicted on this map represents the results of a survey conducted on the date indicated and can only be considered to represent the general condition existing at that time.

The location of navigation aids are based on and provided by the U.S. Coast Guard.



DISCLAIMER: The U.S. Army Corps of Engineers provides this information for informational purposes only. It is not intended for use in any legal proceeding or as a basis for any claim. The Corps of Engineers makes no warranty, express or implied, regarding the accuracy, completeness, or timeliness of the information. The user assumes all liability for any use of this information. The U.S. Army Corps of Engineers is not responsible for any damage or loss resulting from the use of this information.

KANSAS CITY DISTRICT MISSOURI RIVER AREA OFFICE	
Submitted By:	MRAO
Reviewed By:	MRAO
Approved By:	MRAO

Survey Information

MO_02_LMR
 MO_02_LMR_20201117_CS_122_5_123_0_SORT
 17 November 2020

Sheet Number
 11 of 46